

EXPERT STITCH MANAGER

<EXPERT Stitch Manager>

The **EXPERT Stitch Manager** is a tool for directly transferring embroidery design and color change information to one and up to four embroidery machines at once. **EXPERT Stitch Manager** also allows embroidery designs to be saved with proper color change information to be used at a later time without reassigning colors.

The easy "Click 'N Drag" feature makes multiple machine networking and design loading quick and simple.

The **EXPERT Stitch Manager's** on screen real time stitch viewer allows you to monitor individual machine progress as the designs are stitched out.

For the operation of **EXPERT Stitch Manager**, switch the tab on the right screen as follows:

[Folder] -> [Stitch File] -> [Stitch Sequence] -> [Send]

I. INTRODUCTION

1. MAIN SPECIFICATIONS

- Applicable OS: Windows 98, Me, 2000, XP
(Windows is a trademark of Microsoft Corporation)
- Applicable embroidery format : TOYOTA (.10o), TAJIMA (.dst, .dsb, .dsz)
- Recommended monitor resolving level: over 1024 x 768

2. CONNECTION WITH EMBROIDERY MACHINE

- Set the machine for the telemetry mode (please refer to the instruction manual for the embroidery machine).
- Set the same communication speed for computer and embroidery machine (please refer to page 4 of this instruction manual).

Note: To connect several machines to one computer, an adopter to add serial port (RS232C) is required.

3. INSTALLATION

- Double-click the installer **setup.exe** and install the software by following the instruction on the screen.
- >The short cut is displayed on the desk top.

4. BEFORE USE

- Prepare embroidery data in a folder.

EXPERT STITCH MANAGER

- Contents -

I. INTRODUCTION

1. MAIN SPECIFICATIONS	1
2. CONNECTION WITH EMBROIDERY MACHINE	1
3. INSTALLATION	1
4. BEFORE USE	1

II. OPERATION PROCEDURE

1. STARTING UP THE SOFTWARE	3
2. SETTING THE EMBROIDERY MACHINE	4
3. SELECTION OF THE EMBROIDERY DATA	5
i) COLOR ADJUSTMENT OF THE EMBROIDERY DATA	6
ii) SETTING THE FILE NAME FOR THE EMBROIDERY MACHINE	7
4. TRANSFER THE EMBROIDERY DATA	8
i) THREAD COLOR SETTING OF THE EMBROIDERY MACHINE	8
ii) INFORMATION CHECK OF THE EMBROIDERY DATA	9
5. MONITOR OF ON-GOING EMBROIDERY	10
6. FINISH THE SOFTWARE	11
7. OTHER INFORMATION	11

III. UNISON OPERATION MODE	12
---	-----------

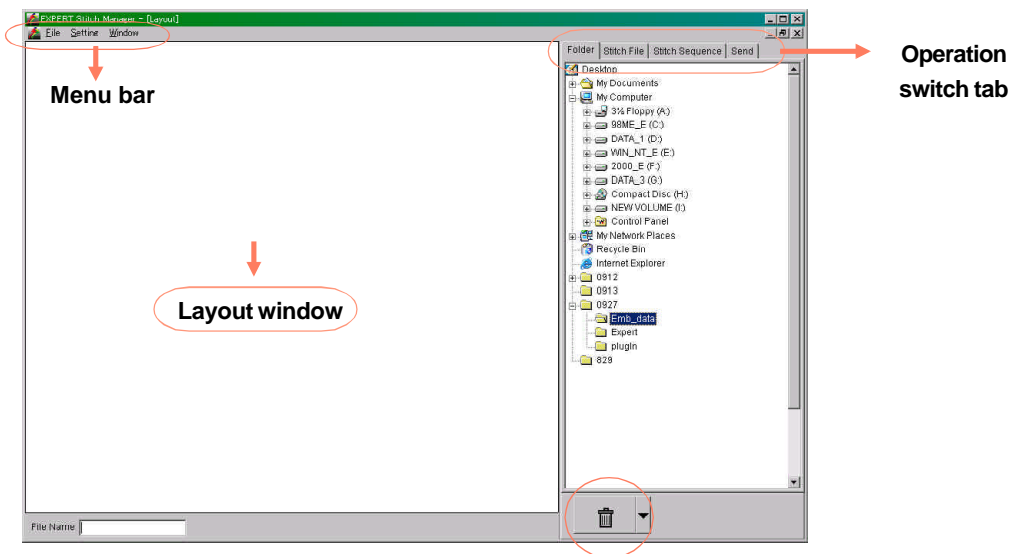
II. OPERATION PROCEDURE

1. STARTING UP THE SOFTWARE

1) For starting up the software, double-click the short cut [EXPERT Stitch Manager] or select [EXPERT Stitch Manager] from [Start], [Program].

The initial screen of [EXPERT Stitch Manager] will be displayed.

-Construction of the screen



Menu bar

[File] → [Exit] --- Finish the software
 [Setting] → [Back Color] --- Select back color of window
 → [Recent Files] --- Setting of record of transferred data
 → [Port] --- Setting of port, communication speed
 [Window] → [Cascade] --- Display several windows one on another
 → [Tile] --- Display several windows side by side
 → [Layout] --- Select active window

Switching tab

[Folder] --- Display and selection of drive folder
 ↓
 [Stitch File] --- Review and selection of embroidery data
 ↓
 [Stitch Sequence] --- Display and change stitch sequence of selected embroidery data
 ↓
 [Send] --- Transfer embroidery data and monitor on-going

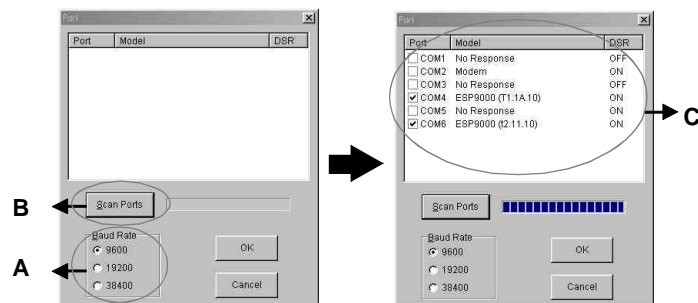
Trash can

[Delete] --- Delete data
 [Delete All] --- Delete all data

2. SETTING THE EMBROIDERY MACHINE

*This operation is required only when starting up the software for the first time. Resetting is not necessary unless the port for connecting embroidery machine and/or portrait etc is changed.

- 1) Turn on the power of the embroidery machine and set the communication speed (please refer to the instruction manual for the embroidery machine).
- 2) Select **[Port]** from **[Setting]** of menu bar and display port setting screen.



-Setting the communication speed

1. Set the communication speed on **[Baud Rate] A**.

Note: The communication speed of all embroidery machines connected to the computer must be the same.

-Selection of the port

1. Click **[Scan Ports] B** then the connected embroidery machine is displayed on **C**.

COM1 through COM16 including PC and adapter is scanned.

2. Select maximum 4 embroidery machines to be used from scanned **C**.

- 3) Click **[OK]** to confirm the setting.

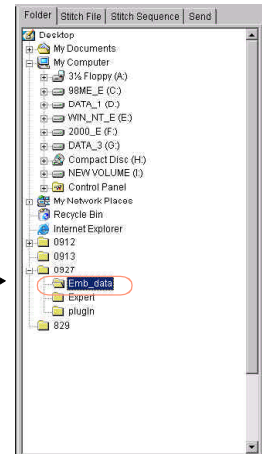
3. SELECTION OF EMBROIDERY DATA

Note: Embroidery data applicable for this software are
TOYOTA (.10o), TAJIMA (.dst, .dsb, .dsz).

Folder

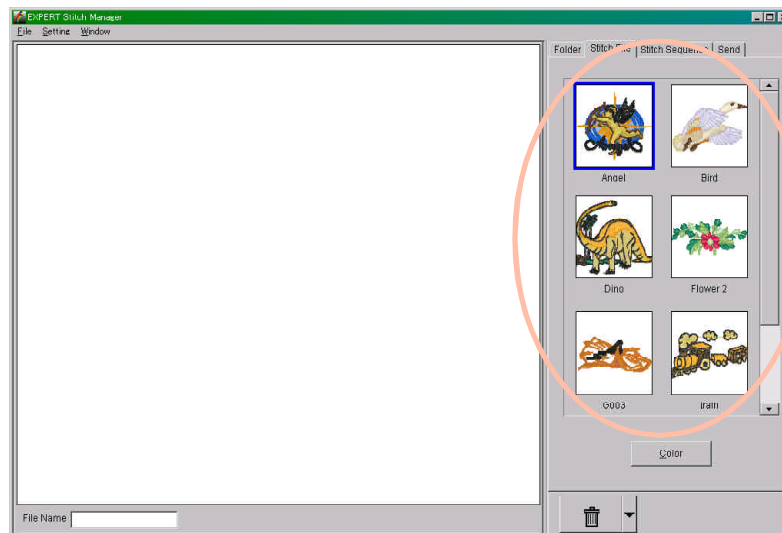
1) Drive folder is displayed in the tab **[Folder]**. Select the folder with the embroidery data.

*When the program finishes, the last folder is memorized.
When the program starts up next time, the last folder is selected.



Stitch File

2) Click the tab **[Stitch File]** then all embroidery data in the selected folder is displayed.



Display all data

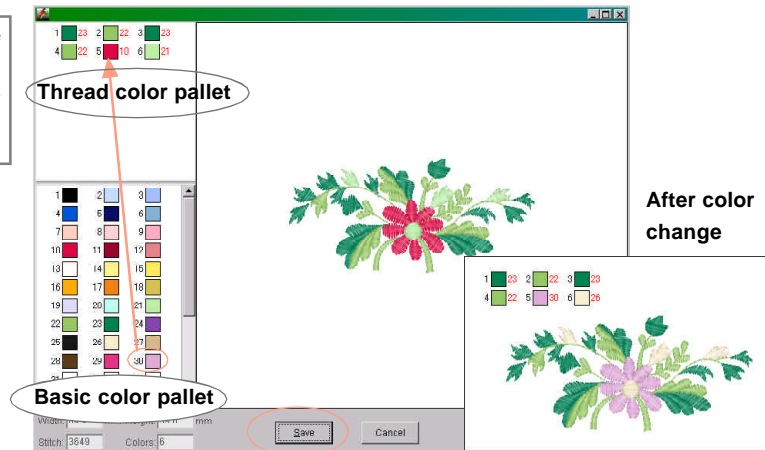
* With some data, the embroidery design could be displayed only with black color. In such case, you can set the color with this soft and register it (see next page).

i) COLOR ADJUSTMENT OF EMBROIDERY DATA

1. Select embroidery data to change color and click [**Color**].
2. Drag most similar color to your image from the basic color pallet and drop on the selected number of the thread color pallet.
To make a new color, double-click a color from the basic color pallet and make the new color on the color setting screen.

Note: The left numbers are embroidery sequence.
The right numbers are color number.

Color setting screen



3. Click [**Save**], select the saving place, save the embroidery data after color change.
The color of the display on the stitch file is also changed.

- 3) Move the embroidery file to embroider from the stitch file to the layout screen on the left side by drag and drop. You can also drag several data at once and make a new data.



To move data Left-click the embroidery data on the screen.

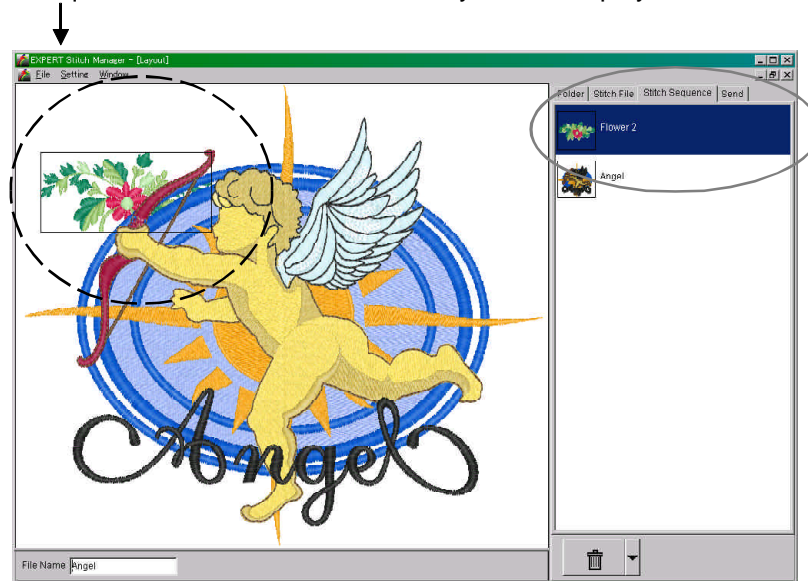
To delete data Delete one data: Drag the data from the screen and move to the trash can
or select [**Delete**] by right-click.

Delete all data: Select [**Delete All**] from trash can or by right-click.

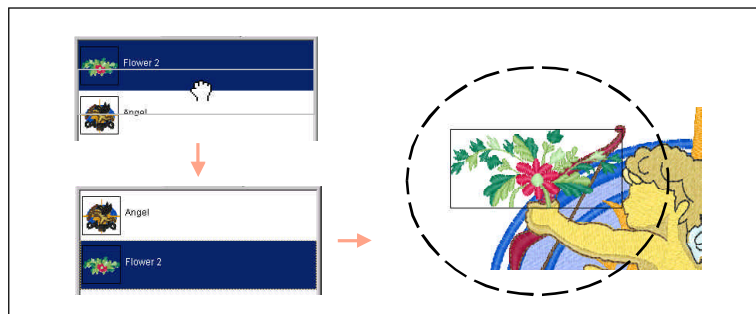
Stitch Sequence

4) Click the tab [Stitch Sequence].

Stitch sequence of the selected embroidery data is displayed.



To change the sequence, drag the embroidery data, so the first item to stitch is at the top of the list.



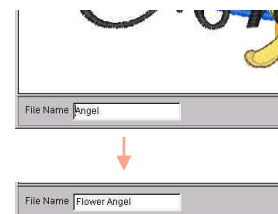
ii) SETTING THE FILE NAME FOR THE EMBROIDERY MACHINE

It's available to set the data name for the embroidery machine that will be displayed on the machine's console after transferring.

It's valid in the operation [Stitch File], [Stitch Sequence] or [Send].

1. The file name that was selected first is shown in the [File Name] box at the bottom of screen.

2. Input new name in the [File Name] box.

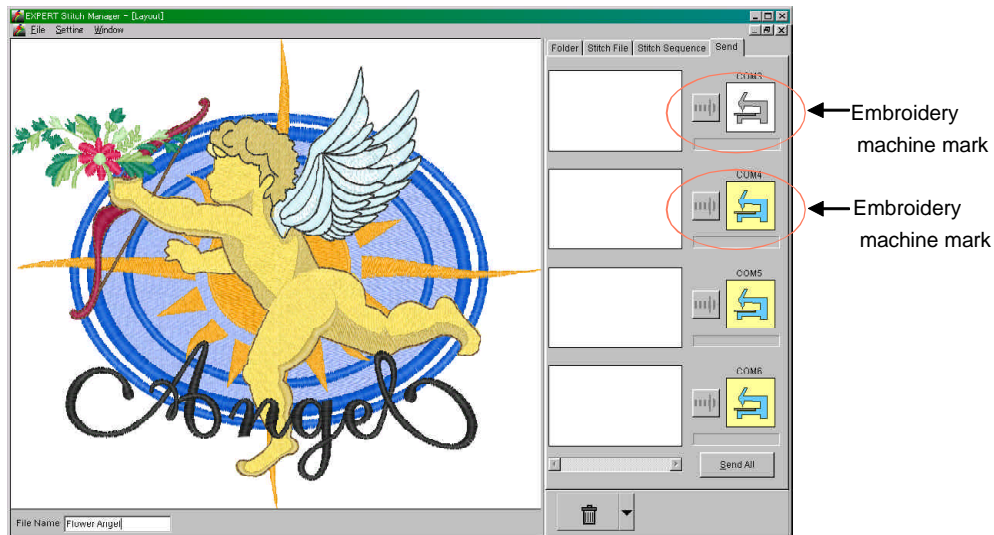


4. TRANSFER THE EMBROIDERY DATA

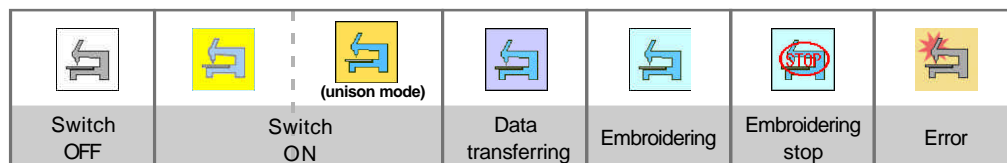
Send

5) Click the tab [Send]

The embroidery machine(s) selected on the port setting screen (page 4) is (are) displayed.



Embroidery machine mark changes according to the status of the selected machine.



6) Thread color setting of each embroidery machine

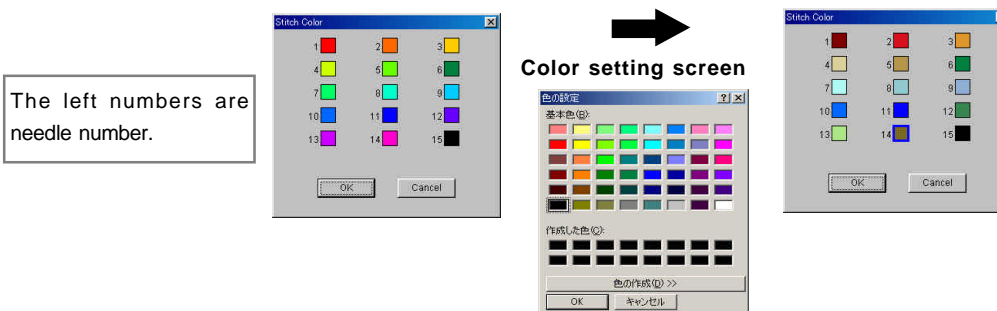
With this function, you can monitor the thread color on the screen in the same color as the embroidery machine, or the software will automatically select a similar color to the data.

i) THREAD COLOR SETTING OF THE EMBROIDERY MACHINE

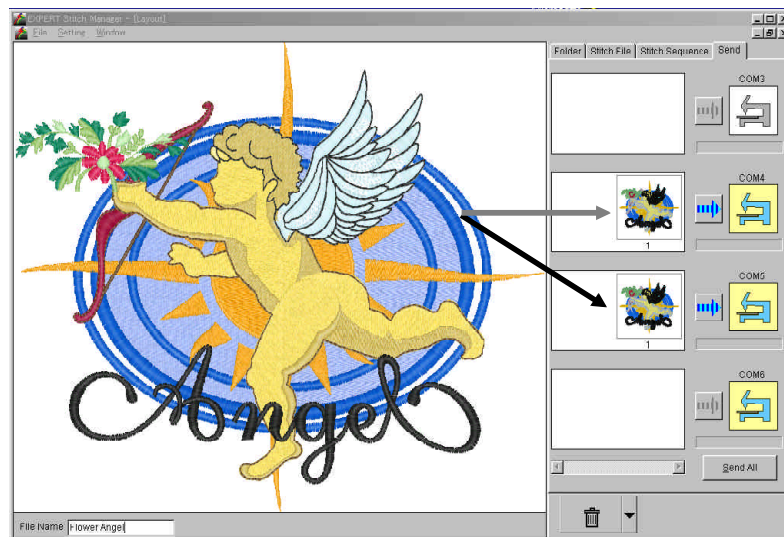
Click the **embroidery machine mark** and display [Stitch Color] dialog box.

1. Click the stitch color, display the color setting screen and make the similar colors to the thread color set on the embroidery machine.

After changing all colors, click [OK] to confirm the thread color.



- 7) To copy, drag the embroidery data on the layout screen and drop it on the box to the left of the embroidery machine. By dropping continuously to other box, the same embroidery data is copied.
- * Embroidery data can not be transferred to the embroidery machine in Switch OFF status.



8) Information check of embroidery data

ii) INFORMATION CHECK OF THE EMBROIDERY DATA

1. Double-click the copied box.
2. The following information will be displayed on the [Color] dialog box:
 - Embroidery sequence and automatically selected needle numbers
 - Embroidery data in the pre-set thread colors
 - Start point displayed by cross cursor
 - Embroidery size etc..

Embroidery sequence pallet

1	9	2	10	3	8
4	10	5	9	6	3
7	8	8	8	9	14
10	9	11	14	12	7
19	6	14	4	16	9
16	15	17	12	18	10
19	12	20	13	21	2
22	13				

Note: The left numbers are embroidery sequence.
The right numbers are color number.

Thread color pallet

1	2	3	4
5	6	7	8
9	10	11	12
13	14	15	16


Note: The left numbers are needle number.

Embroidery size etc.

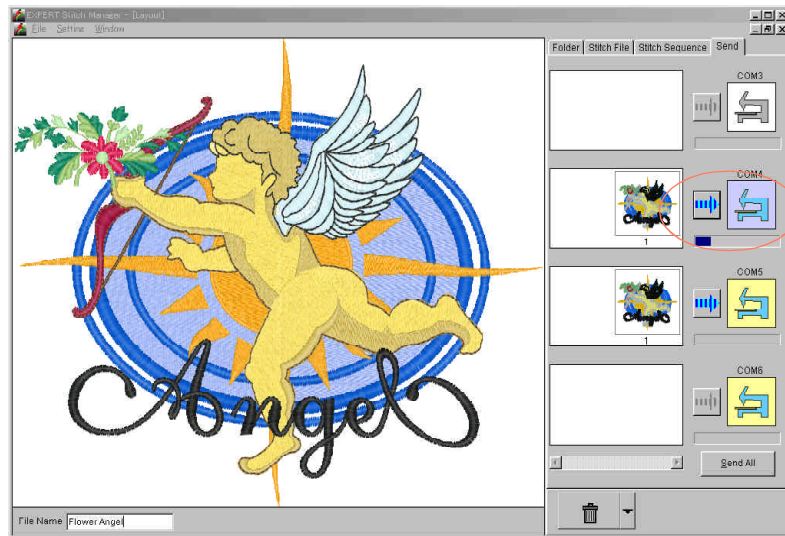
Width	254.4	Height	232.6	-X	1202	+X	1252
Stitch	76185	Scale	57%	-Y	1929	+Y	397

*Although the needle numbers are automatically selected, they can be changed by dragging a color from thread color pallet to the embroidery sequence pallet.

3. Click [OK] to return.

9) Click  mark to transfer the embroidery data to one embroidery machine.

-> After transferring, the data in the box is deleted.



← During the data transfer (Green)

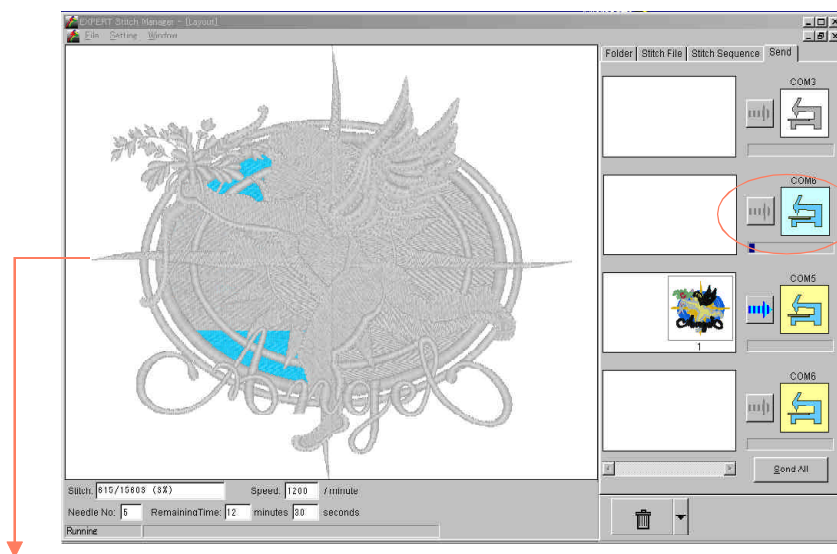
* Click [**Send all**] to transfer the embroidery data to all embroidery machines at once.

*The transfer of the embroidery data and setting of the needle number are done at the same time. And the embroidery machine is set for the **embroidery start mode**.

5. MONITOR OF ON-GOING EMBROIDERY

10) Check the needle numbers of the embroidery data and the start point then start the embroidery machine.

Embroidery starts and the monitor screen of the selected embroidery machine including the layout screen is displayed.



← Embroidery machine during embroidery (Blue)

*On the monitor screen, the progress of the embroidery can be checked both with simulation and numerical value.

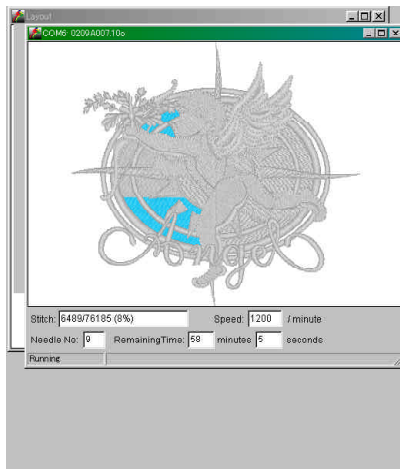
6. FINISH THE SOFTWARE

11) To finish the software, select **[Exit]** from the menu bar **[File]** or click **[Close]** button on the upper right.

7. OTHER INFORMATION

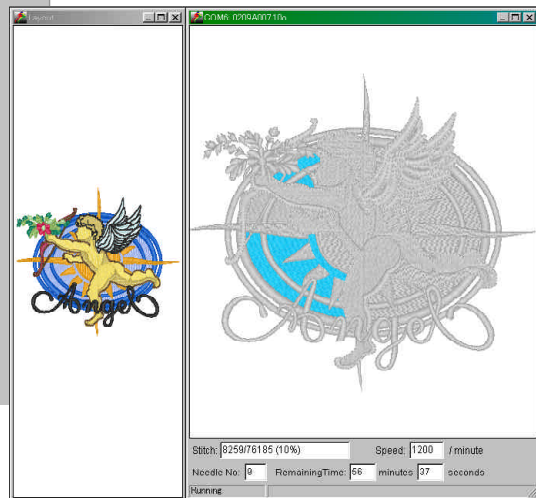
Change the screen display

The screen display can be changed by selecting **[Cascade]** or **[Tile]** from the menu bar **[Window]**.



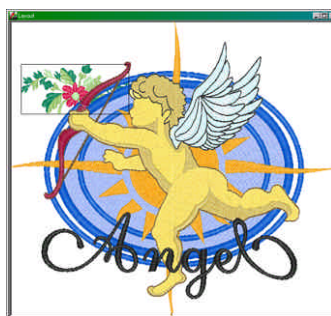
↑ **[Cascade]** displays several windows one on another

↓ **[Tile]** displays several windows side by side



Change the background color

Select **[White]** or **[Gray]** of **[Back Color]** from the menu bar **[Setting]**.



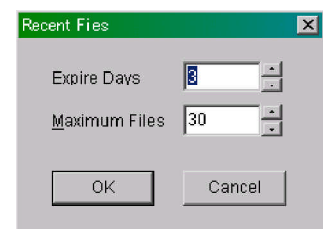
Memory of the transfer data

The memory of the embroidery data transferred to the embroidery machine is saved separately in the PC to monitor the embroidery machine.

To change the setting of the memory:

1. Select **[Recent Files]** from the menu bar **[Setting]** and display the setting screen.
2. Input the expire days or maximum number of files and click **[OK]**.

*Place of saving...**[Send Data]** folder in the same folder as application software **[EXPERT Stitch Manager.exe]**.



III. UNISON OPERATION MODE

The **Unison Operation Mode** is available to operate up to four embroidery machines connected through PC at same time.

First of all, the embroidery machines should be in **Unison Operation Mode**.

Note: In this mode, the movement of all machines are not synchronized so that the sewing time, progress of sewing, etc. will not be the same.

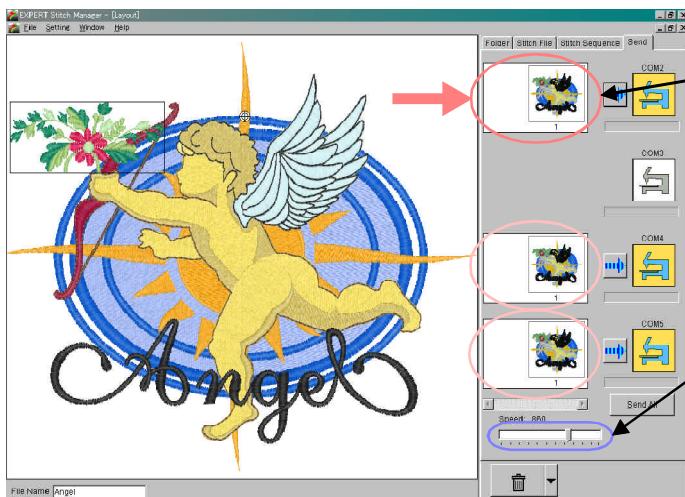
Note: **EXPERT Stitch Manager** becomes Unison Operation Mode when at least one of the embroidery machines connected with PC is in Unison Operation Mode. At that time, the embroidery machines not set for Unison Operation Mode will be disconnected with **EXPERT Stitch Manager**.

<On PC>

Send box:It is available to set the same embroidery data at once.

Speed bar:It is available to adjust the sewing speed for all connected machines.

Sewing speed can be also adjusted during sewing.



Send Box

Set an embroidery data to one of the send boxes by drag and drop, then it will be automatically transferred to all send boxes.

Speed bar

adjustable 120 to 1200r.p.m.
It only appears in Unison Operation Mode.

<On the embroidery machine>

Start:Start the all machines by **[START]** operation of any machine at once.

The all machines will start from the same hoop position set by the machine which has operated to start first.

Stop:Stop the all machines by **[STOP]** operation of any machine at once.

Stop by error:All machines stop by errors of any amachine at once.

Note: This mode will be available to operate the machines with the same embroidery data that has same file name.

